



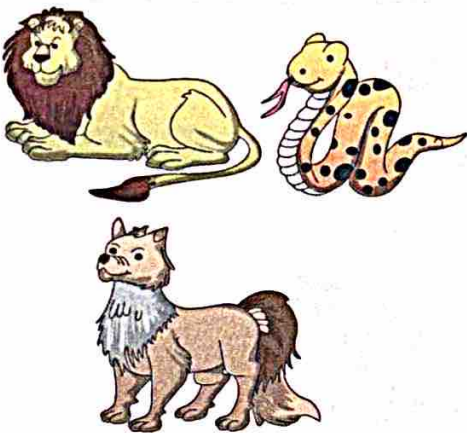
Animal World

There are many animals in our world.

Let's categorize animals on the basis of their habitat (the place where they live):

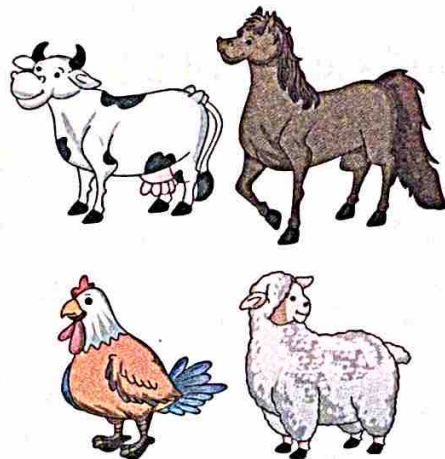
1. Land Animals

The animals that live on the land are called **land** or **terrestrial animals**. Land animals are of three types:



Wild animals

The animals that live in forests are called wild animals.



Domestic animals

The animals that are kept in farms are called domestic animals.



Pet animals

The animals that are kept at home are called pet animals.

Pets are a part of our family. We should take care of them.

2. Water Animals

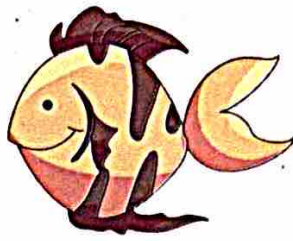
Animals that live in water are called **water** or **aquatic animals**. Examples : Fish, seahorse, octopus, etc.

Teacher's Tip

Encourage the children to make a chart on the animal world.

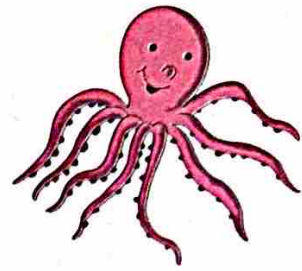


Seahorse



Fish

Water animals



Octopus

3. Amphibians

Animals that live on land as well as on water are called **amphibians**.
Examples : Frog and crocodile.

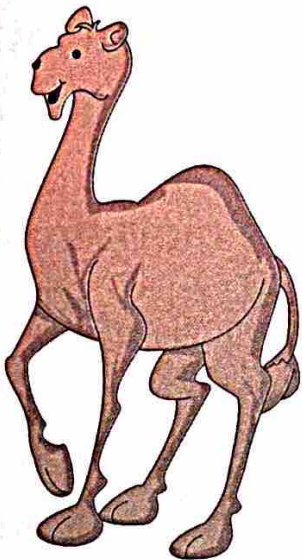


Frog

Crocodile



Amphibians



Desert Animal

4. Desert Animals

Animals that live in a desert are called **desert animals**.
Example: Camel

Did You Know?

A camel is called the ship of the desert.

5. Snow Animals

Some animals survive in snow. Some of such animals are snow leopard and polar bear.



Snow leopard

Polar bear



Snow Animals

6. Arboreal Animals

Animals that live on trees are called arboreal animals. Some of the arboreal animals are monkey, squirrel and birds.



Monkey



Bird

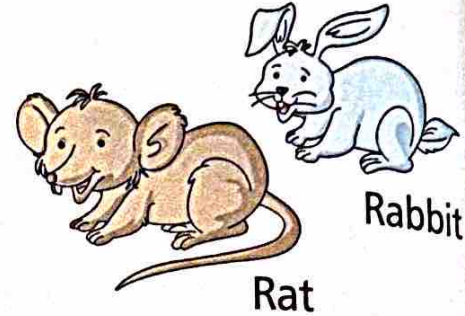


Squirrel

Arboreal Animals

7. Underground Animals

Some animals live in burrows and holes under the ground. Examples : snakes, rabbits, rats and moles.



Rat

Rabbit

Characteristics of Animals

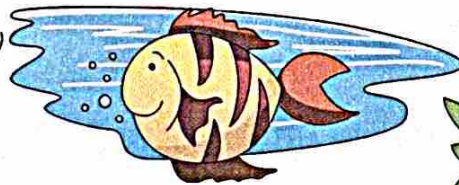
Animals are also living beings. They have all the features of a living being.

1. Animals move

Animals like dog, cow, fish, birds and insects move from one place to another. Some animals walk and run, some fly, some crawl and some swim.



A dog runs.



A fish swims.



A bird flies.

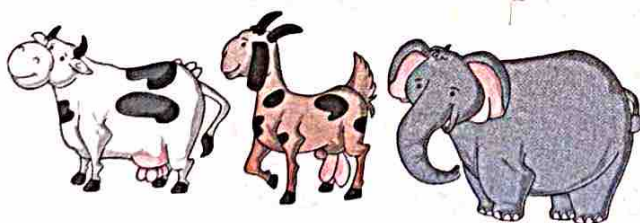


A snake crawls.

2. Animals need food

All animals need food to get energy and grow.

Some animals eat green plants. They are called **plant eaters**.



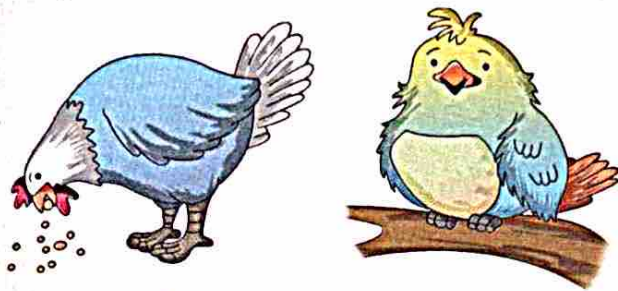
Plant eaters

Some animals eat flesh of other animals. They are called **flesh-eaters**.



Flesh-eaters

Some animals eat grains.
They are called **grain eaters**.

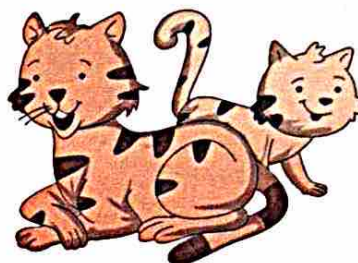
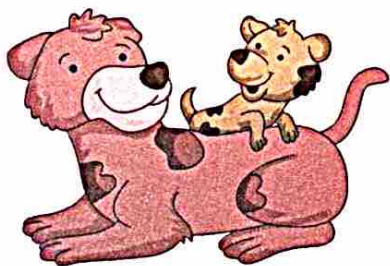


Some animals eat insects.
They are called **insect eaters**.



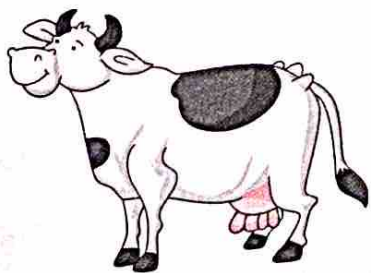
3. **Animals grow**

All animals grow. A baby kitten grows into a cat. A baby dog (puppy) grows into a dog.

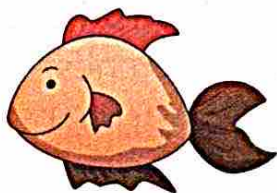


4. **Animals breathe**

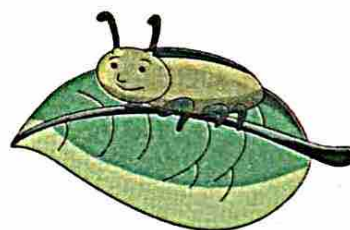
Animals breathe as we do. Some animals breathe through lungs. Some breathe through gills and some have air tubes for breathing.



A cow breathes through lungs.



A fish breathes through gills.



Insects breathe through air tubes.

5. **Animals have feelings**

Animals have feelings. When we show our love and care to them, they feel good. When we hurt them, they are sad or sometimes get angry.



Shelter of Animals

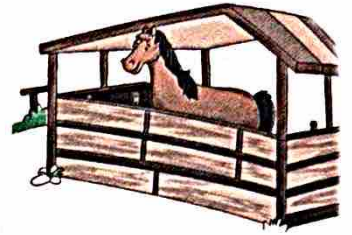
Like us, animals also need a place to live in. A place where an animal lives is its **shelter**.



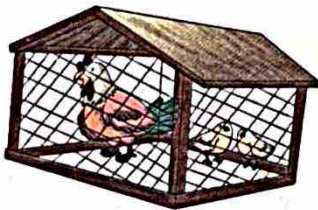
A cow lives in a shed.



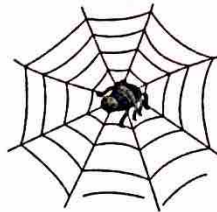
A dog lives in a kennel.



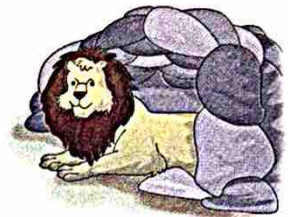
A horse lives in a stable.



A hen lives in a coop.



A spider lives in a web.



A lion lives in a den.



A bear lives in a cave.



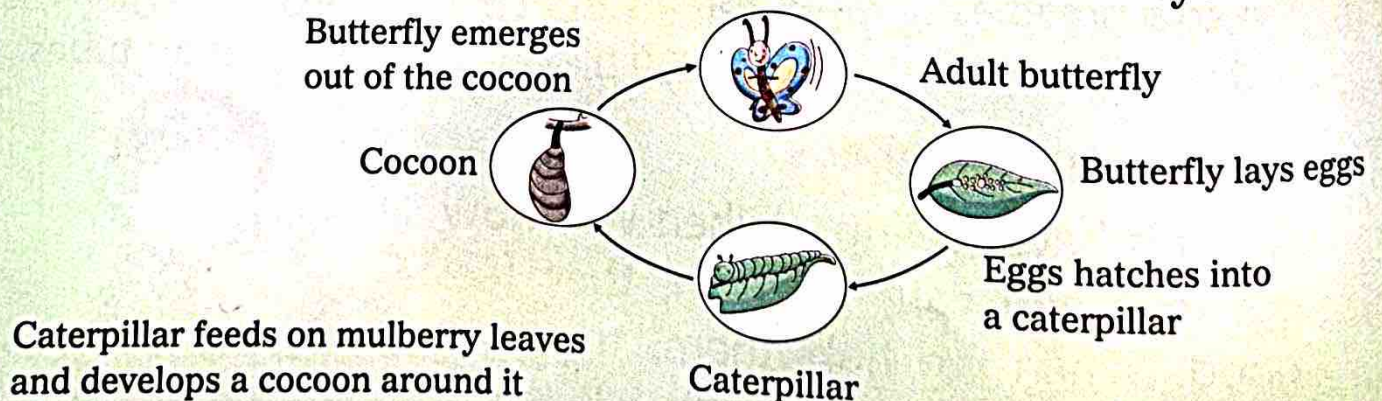
A bird lives in a nest.



A honeybee lives in a hive.

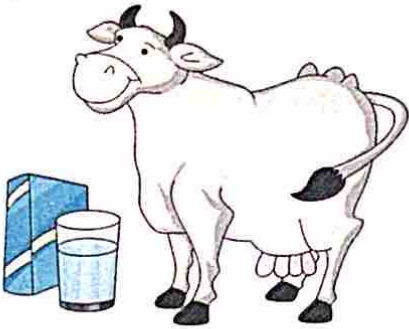
Did You Know ?

Butterfly is a beautiful insect. Let's know about its life cycle.



Relationship between Human-beings and Animals

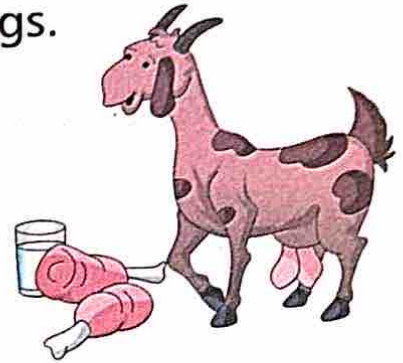
Animals are our friends. They give us many things.



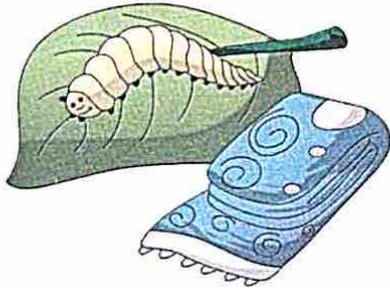
A cow gives us milk.



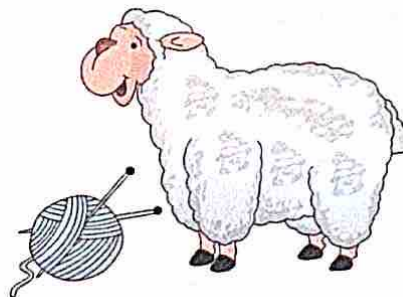
A hen gives us eggs.



A goat gives us milk and meat.



A silkworm gives us silk.



A sheep gives us wool.



A honeybee gives us honey.

Different animals are used for carrying loads like elephants, horses, camels and donkeys.

We should take care of domestic and pet animals. They are our helpers. We should provide them proper food and shelter. We should not allow anyone to hurt animals.

Let's Recall

- * There are many kinds of animals in our world.
- * Some animals live on land, some in water, some in a desert, some on trees and some underground.
- * Animals move, eat, grow, feel and breathe.
- * Animals are our helpers.
- * We should protect and take care of them.

Let's Answer

A. Answer the following questions:

1. What are terrestrial animals?

2. What are aquatic animals?

3. What are amphibians?

4. Which animals live on trees?

B Match the following:

1. Hen

a. Shed ②

2. Cow

b. Hive ④

3. Lion

c. Stable ⑥

4. Honeybee

d. Web ⑦

5. Bear

e. Coop ①


6. Horse

f. Cave ⑤

7. Spider

g. Den ③

C. Draw the life cycle of a butterfly here:

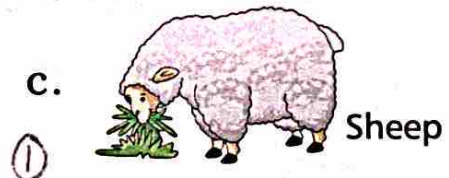
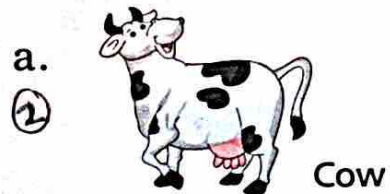
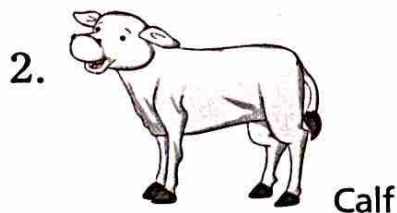
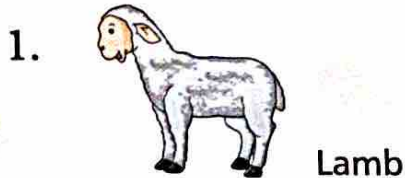


D. Tick (✓) the correct word:

1. Animals are our (*helpers* / *enemies*).
2. A caterpillar feeds on (*cocoon* / *mulberry leaves*).
3. Animals (*do not have* / *have*) feelings.
4. A fish breathes through (*lungs* / *gills*).
5. Frog and crocodile are (*amphibians* / *aquatic animals*).

Let's Do

A. Can you take the young ones to their moms?



B. Complete the table with the sounds of different animals:

Animal	Sound
Lion	roar
Dog	<u>bark</u>
Monkey	<u>chatter</u>
Snake	<u>hiss</u>
Elephant	<u>trumpet</u>

Animal	Sound
Cow	<u>moor</u>
Cat	<u>meow</u>
Bird	<u>chirp</u>
Sheep	<u>bleat</u>
Horse	<u>neigh</u>

Tender Heart High School

Class- II

Date: 25.11.24

Subject: Environmental Studies

Teachers: Ms. Harjit Kaur, Ms. Jyoti Arora, Ms. Rupinder Kaur

Lesson- 14, Animal World

I Fill in the blanks:

1. The animals that live in forests are called wild animals.
2. Monkey is an arboreal animal.
3. Rats live under the ground.
4. A fish breathes through gills.
5. A honeybee gives us honey.

II Write true or false:

- | | |
|------------------------------------|--------------|
| 1. Octopus is a desert animal. | <u>false</u> |
| 2. A fish can crawl on land. | <u>false</u> |
| 3. A baby kitten grows into a cat. | <u>true</u> |
| 4. Lion is a flesh eater animal. | <u>true</u> |
| 5. Crocodile is a pet animal. | <u>false</u> |

III Match the following:

- | | |
|-------------|------------|
| 1. Hen | shed (2) |
| 2. Cow | Hive (4) |
| 3. Lion | stable (6) |
| 4. Honeybee | Web (7) |
| 5. Bear | coop (1) |
| 6. Horse | Cave (5) |
| 7. Spider | den (3) |

(last page)