

IV Tick (✓) the correct option:

1. The sun is a big ball of fire.
a) water ☒ b) fire c) air
2. Jupiter is the biggest planet of our solar system.
a) Saturn b) Mercury ☒ c) Jupiter
3. Mars is called the red planet.
☒ a) Mars b) Earth c) Venus
4. The Earth takes 24 hours to complete one rotation.
a) 20 ☒ b) 24 c) 16

V Answer the following questions:

Q1. Describe the sun.

Ans The sun is a big ball of fire. It gives us heat and light. The sun rises in the east and sets in the west.

Q2. Describe the moon.

Ans Moon is the natural satellite of our planet Earth. We can see the moon shining in the night sky.

Q3. How does the sky look during the rainy season?

Ans The sky looks grey during the rainy season. It is covered by dark clouds.

VI Name the eight planets of our solar system.

- Ans
1. Mercury
 2. Venus
 3. Earth
 4. Mars
 5. Jupiter
 6. Saturn
 7. Uranus
 8. Neptune

(Last page)



Time

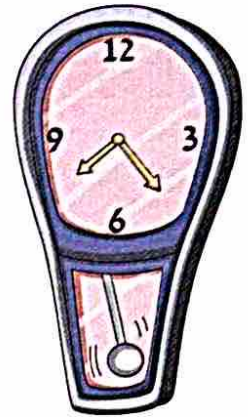
We know the time using clocks and watches. We have different types of clocks and watches.



Digital watch



Wall clock



Pendulum clock

Let us study about the various spans of time:

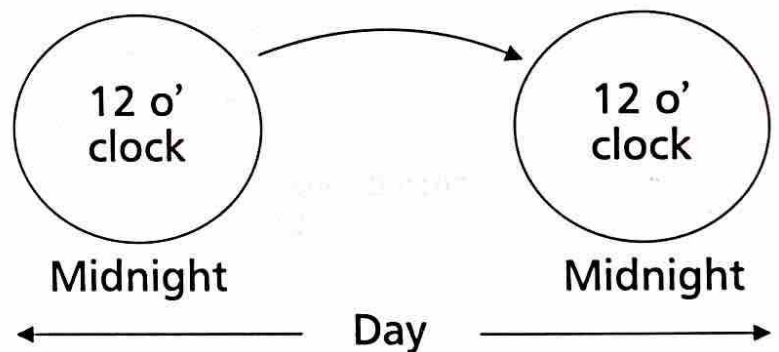
Day

A day starts from 12 o' clock midnight and ends just before the next midnight. This is the time taken by the Earth to rotate on its axis once.

A day has 24 hours.

An hour has 60 minutes.

A minute has 60 seconds.



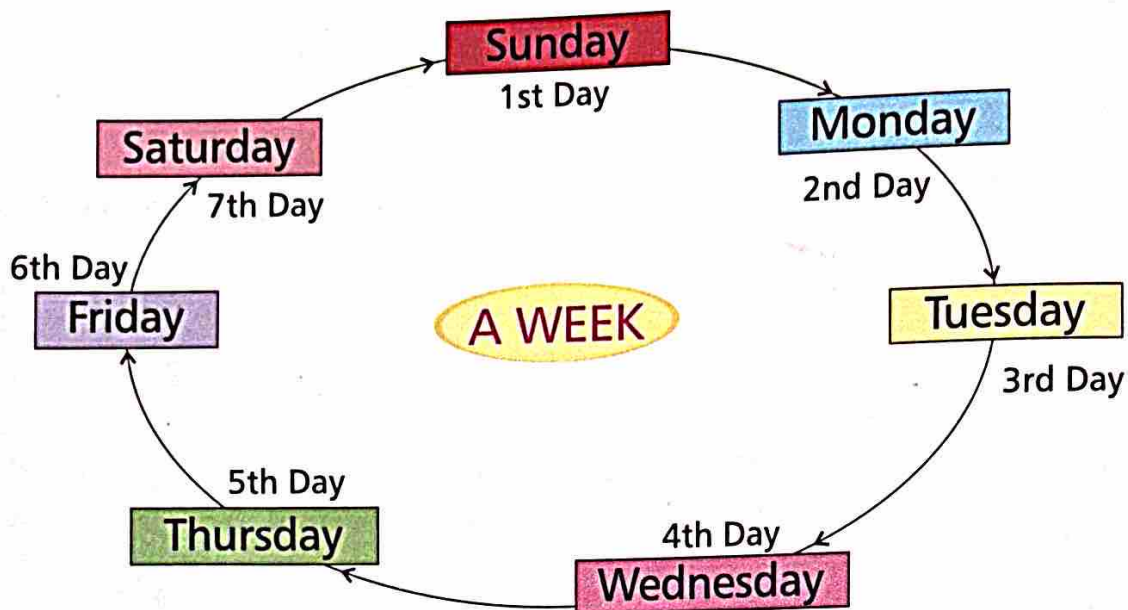
Week

A week starts from Sunday and ends on Saturday. A week has 7 days.

Teacher's Tip

Give tips to the children that they should never waste time.

Cycle of Days



Month

A month has '30' or '31' days. There are 4 weeks in a month. There are 52 weeks in a year. There are 12 months in a year.

1. January
2. February
3. March
4. April
5. May
6. June
7. July
8. August
9. September
10. October
11. November
12. December

2018 Calendar

| January 2018 | February 2018 | March 2018 | April 2018 |
|--|--|--|---|
| M T W T F S S 1 2 3 4 5 6 7 8 9 10 11 12 13 14 15 16 17 18 19 20 21 22 23 24 25 26 27 28 29 30 31 | M T W T F S S 1 2 3 4 5 6 7 8 9 10 11 12 13 14 15 16 17 18 19 20 21 22 23 24 25 26 27 28 | M T W T F S S 1 2 3 4 5 6 7 8 9 10 11 12 13 14 15 16 17 18 19 20 21 22 23 24 25 26 27 28 29 30 31 | M T W T F S S 1 2 3 4 5 6 7 8 9 10 11 12 13 14 15 16 17 18 19 20 21 22 23 24 25 26 27 28 29 30 |
| May 2018 | June 2018 | July 2018 | August 2018 |
| M T W T F S S 1 2 3 4 5 6 7 8 9 10 11 12 13 14 15 16 17 18 19 20 21 22 23 24 25 26 27 28 29 30 31 | M T W T F S S 1 2 3 4 5 6 7 8 9 10 11 12 13 14 15 16 17 18 19 20 21 22 23 24 25 26 27 28 29 30 | M T W T F S S 1 2 3 4 5 6 7 8 9 10 11 12 13 14 15 16 17 18 19 20 21 22 23 24 25 26 27 28 29 30 31 | M T W T F S S 1 2 3 4 5 6 7 8 9 10 11 12 13 14 15 16 17 18 19 20 21 22 23 24 25 26 27 28 29 30 31 |
| September 2018 | October 2018 | November 2018 | December 2018 |
| M T W T F S S 1 2 3 4 5 6 7 8 9 10 11 12 13 14 15 16 17 18 19 20 21 22 23 24 25 26 27 28 29 30 | M T W T F S S 1 2 3 4 5 6 7 8 9 10 11 12 13 14 15 16 17 18 19 20 21 22 23 24 25 26 27 28 29 30 31 | M T W T F S S 1 2 3 4 5 6 7 8 9 10 11 12 13 14 15 16 17 18 19 20 21 22 23 24 25 26 27 28 29 30 31 | M T W T F S S 1 2 3 4 5 6 7 8 9 10 11 12 13 14 15 16 17 18 19 20 21 22 23 24 25 26 27 28 29 30 31 |

Did You Know?
 February has 28 days. In a leap year, February has 29 days.

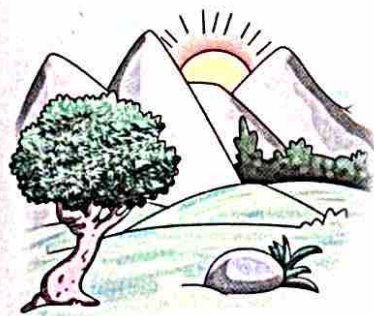
Year

A year is the time taken by the Earth to revolve around the sun. A year has 365 days. Our earth revolves around the sun in 365 ¼ days.

Did You Know?

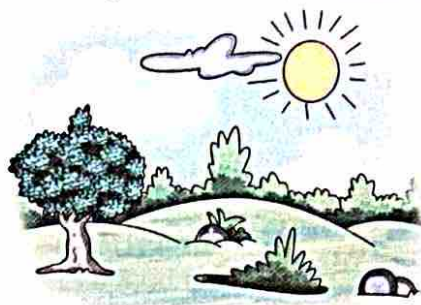
A leap year has 366 days. It comes once in every 4 years.

Phases in a Day



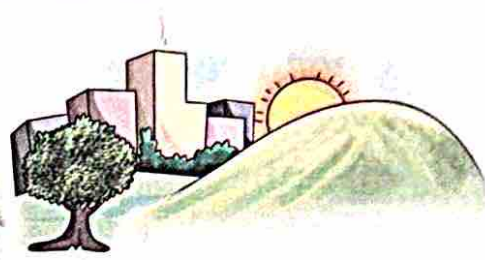
Morning

Sunrise begins in the morning. It lasts till 12 o' clock noon.



Afternoon

Afternoon is the time after 12 o' clock noon and extends till 4 o' clock. At this time, the sun is the brightest.



Evening

When the sun is about to set, it is evening. Evenings are pleasant.

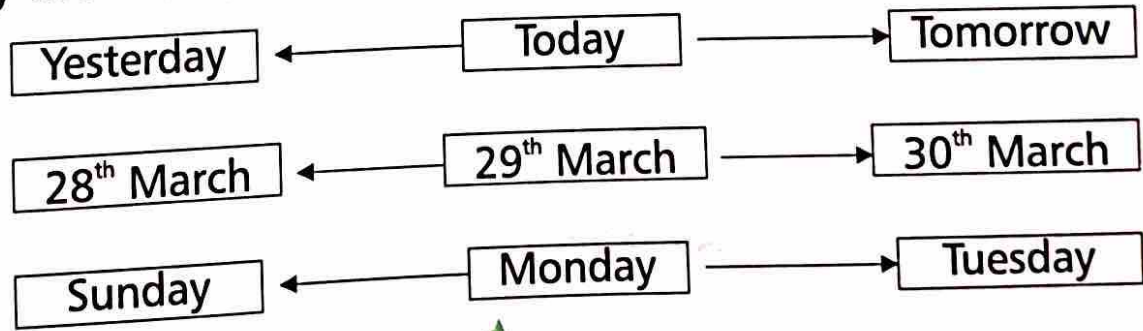


Night

When the sun sets, and the sky is dark, it is night. The moon and stars appear in the night sky.

Yesterday, Today and Tomorrow

- ✿ Now means 'Today'.
- ✿ The day before means 'Yesterday'.
- ✿ The day after means 'Tomorrow'.



Let's Recall

- * We know the time using clocks and watches.
- * A day has 24 hours.
- * An hour has 60 minutes.
- * A minute has 60 seconds.
- * A week has 7 days.
- * A month has 30 or 31 days.
- * A year has 12 months.
- * A year has 365 days. A leap year has 366 days.
- * Different phases of a day are morning, afternoon, evening and night.

Let's Answer

A. Answer the following questions:

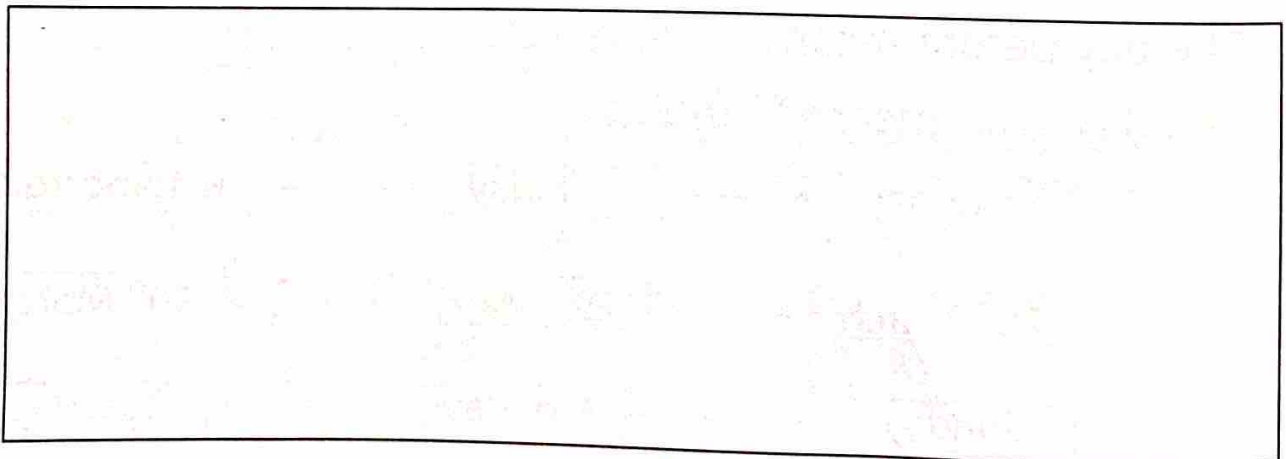
1. What is a day?

2. What is a week?

3. What is a year?

4. What do you mean by yesterday?

B. Draw and mark the cycle of days in a week in this box:

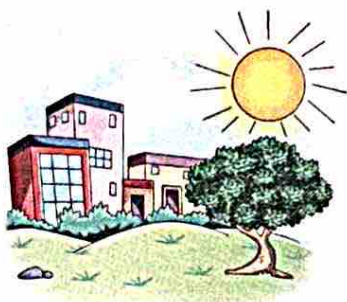


C. Write the names of twelve months of a year:

1. January
2. February
3. March
4. April
5. May
6. June

7. July
8. August
9. September
10. October
11. November
12. December

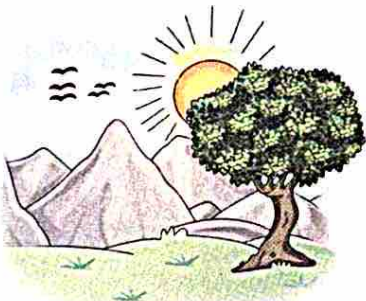
D. Write the name of the phases of the day given below:



Afternoon



Night



Morning



Evening

E. Match the following:

Column I

1. Day
2. Month
3. Week
4. Hour
5. Minute
6. Year

Column II

- a. 60 seconds ⑤
- b. 30 or 31 days ②
- c. 12 months ⑥
- d. 24 hours ①
- e. 60 minutes ④
- f. 7 days ③

Let's Do

Look at the given calendar. Then answer the following questions.

2018 Calendar

| | | | |
|--|---|---|---|
| January 2018 N° S M T W T F S 1 1 2 3 4 5 6 2 7 8 9 10 11 12 13 3 14 15 16 17 18 19 20 4 21 22 23 24 25 26 27 5 28 29 30 31 | February 2018 N° S M T W T F S 5 1 2 3 6 4 5 6 7 8 9 10 7 11 12 13 14 15 16 17 8 18 19 20 21 22 23 24 9 25 26 27 28 | March 2018 N° S M T W T F S 9 1 2 3 10 4 5 6 7 8 9 10 11 11 12 13 14 15 16 17 12 18 19 20 21 22 23 24 13 25 26 27 28 29 30 31 | April 2018 N° S M T W T F S 14 1 2 3 4 5 6 7 15 8 9 10 11 12 13 14 16 15 16 17 18 19 20 21 17 22 23 24 25 26 27 28 18 29 30 |
| May 2018 N° S M T W T F S 18 1 2 3 4 5 19 6 7 8 9 10 11 12 20 13 14 15 16 17 18 19 21 20 21 22 23 24 25 26 22 27 28 29 30 31 | June 2018 N° S M T W T F S 22 1 2 23 3 4 5 6 7 8 9 24 10 11 12 13 14 15 16 25 17 18 19 20 21 22 23 26 24 25 26 27 28 29 30 | July 2018 N° S M T W T F S 27 1 2 3 4 5 6 7 28 8 9 10 11 12 13 14 29 15 16 17 18 19 20 21 30 22 23 24 25 26 27 28 31 29 30 31 | August 2018 N° S M T W T F S 31 1 2 3 4 32 5 6 7 8 9 10 11 33 12 13 14 15 16 17 18 34 19 20 21 22 23 24 25 35 26 27 28 29 30 31 |
| September 2018 N° S M T W T F S 35 1 36 2 3 4 5 6 7 8 37 9 10 11 12 13 14 15 38 16 17 18 19 20 21 22 39 23 24 25 26 27 28 29 40 30 | October 2018 N° S M T W T F S 40 1 2 3 4 5 6 41 7 8 9 10 11 12 13 42 14 15 16 17 18 19 20 43 21 22 23 24 25 26 27 44 28 29 30 31 | November 2018 N° S M T W T F S 44 1 2 3 45 4 5 6 7 8 9 10 46 11 12 13 14 15 16 17 47 18 19 20 21 22 23 24 48 25 26 27 28 29 30 | December 2018 N° S M T W T F S 48 1 49 2 3 4 5 6 7 8 50 9 10 11 12 13 14 15 51 16 17 18 19 20 21 22 52 23 24 25 26 27 28 29 1 30 31 |

- How many Mondays are there in August?
- Which day of the week is 17th April?
- Which month has more Fridays- July or August?
- Which day of the week is 9th September?
- How many Wednesdays are there in the month of February?
- Is 2018 a leap year?

Four

Tuesday

August

Sunday

Four

No